


WR3500910 / CN205391
 10300.120815.531001.5410.E1LA.000000000.0000000

REVISIONS			
DATE	DESCRIPTION	DATE	DESCRIPTION

DANIEL HENDRICKSON, P.E.
 P.E. LICENSE NUMBER 76184
 BURGESS & NIPLE, INC.
 1511 N. WESTSHORE BLVD. SUITE 500
 TAMPA, FL 33607



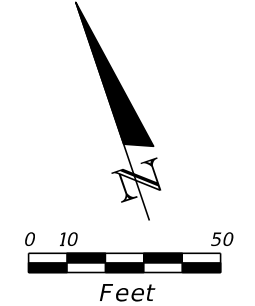
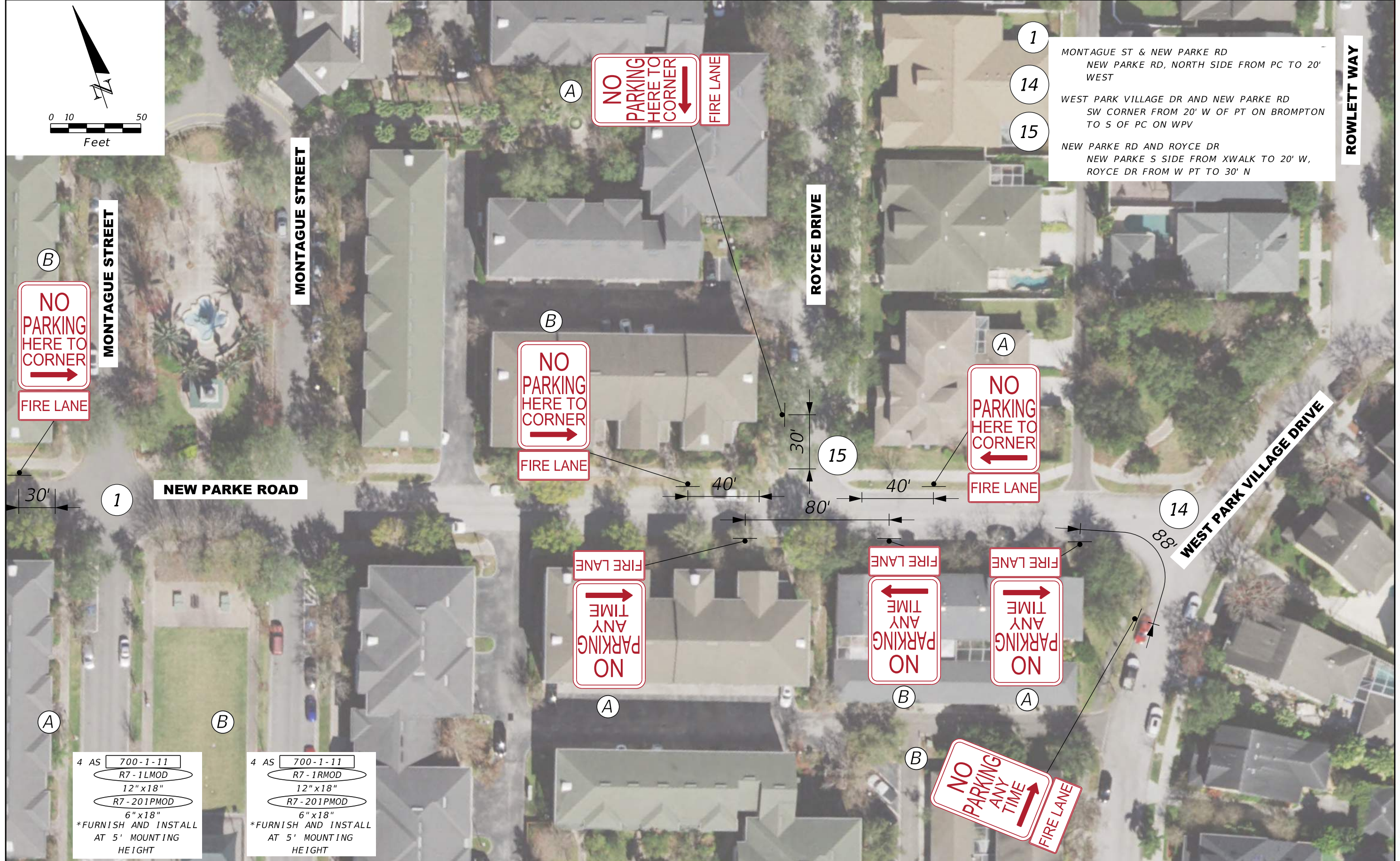
PUBLIC WORKS ADMINISTRATION
 601 E. KENNEDY BLVD.
 TAMPA, FLORIDA 33602

WEST PARK VILLAGE PARKING EXHIBIT

PROJECT LAYOUT

CIP NO.	SHT. NO.
N/A	1

THE OFFICIAL RECORD OF THIS SHEET IS THE ELECTRONIC FILE DIGITALLY SIGNED AND SEALED UNDER RULE 61G15-23.004, F.A.C.



- 1 MONTAGUE ST & NEW PARKE RD
NEW PARKE RD, NORTH SIDE FROM PC TO 20' WEST
- 14 WEST PARK VILLAGE DR AND NEW PARKE RD
SW CORNER FROM 20' W OF PT ON BROMPTON TO S OF PC ON WPV
- 15 NEW PARKE RD AND ROYCE DR
NEW PARKE S SIDE FROM XWALK TO 20' W, ROYCE DR FROM W PT TO 30' N

ROWLETT WAY

WEST PARK VILLAGE DRIVE

MONTAGUE STREET

ROYCE DRIVE

MONTAGUE STREET


NEW PARKE ROAD

4 AS 700-1-11
R7-1LMOD
12"x18"
R7-201PMOD
6"x18"
*FURNISH AND INSTALL AT 5' MOUNTING HEIGHT

4 AS 700-1-11
R7-1RMOD
12"x18"
R7-201PMOD
6"x18"
*FURNISH AND INSTALL AT 5' MOUNTING HEIGHT

REVISIONS			
DATE	DESCRIPTION	DATE	DESCRIPTION

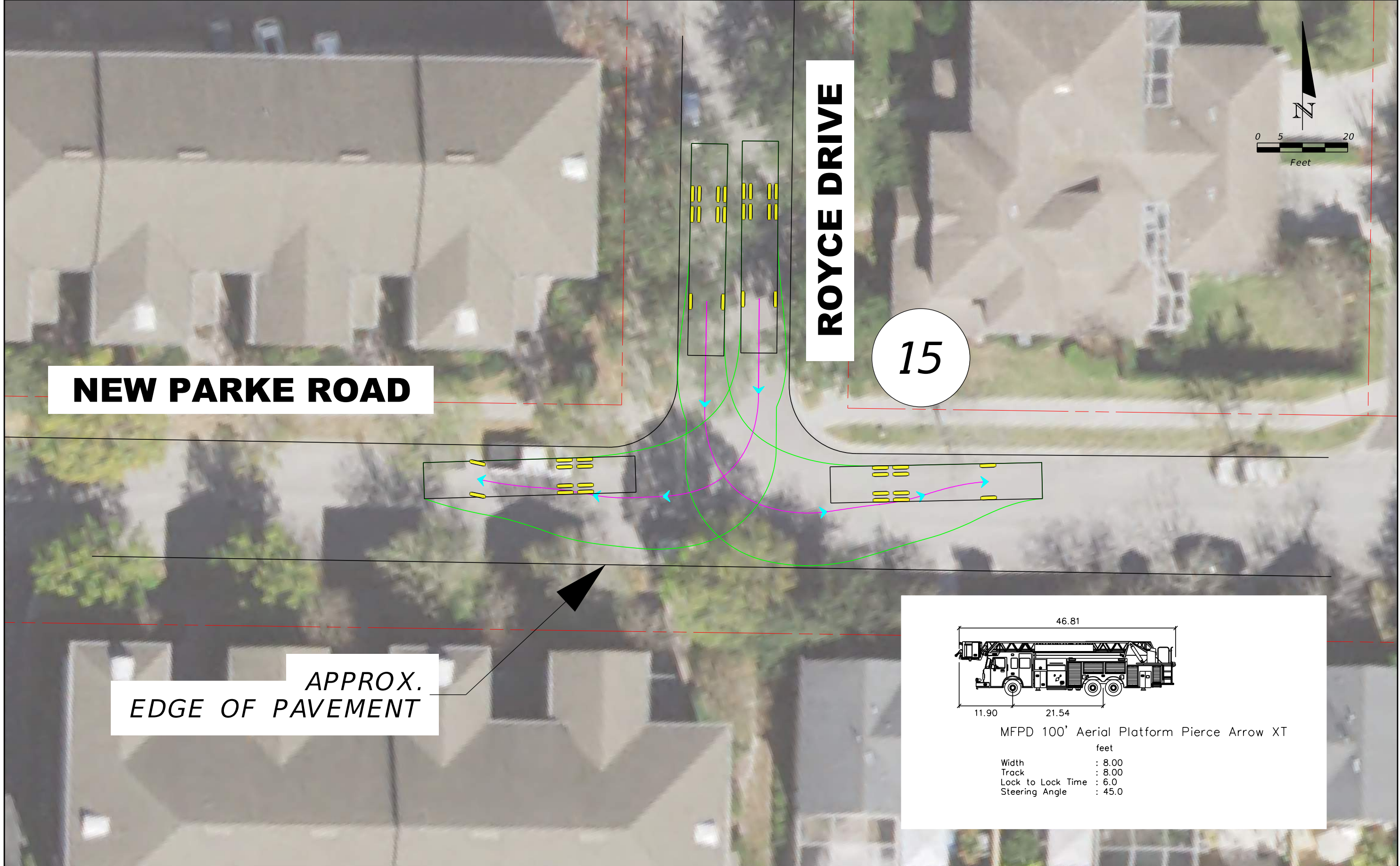
DANIEL HENDRICKSON, P.E.
P.E. LICENSE NUMBER 76184
BURGESS & NIPLE, INC.
1511 N. WESTSHORE BLVD. SUITE 500
TAMPA, FL 33607

 **PUBLIC WORKS ADMINISTRATION**
601 E. KENNEDY BLVD.
TAMPA, FLORIDA 33602

WEST PARK VILLAGE PARKING EXHIBIT
PLAN (1)

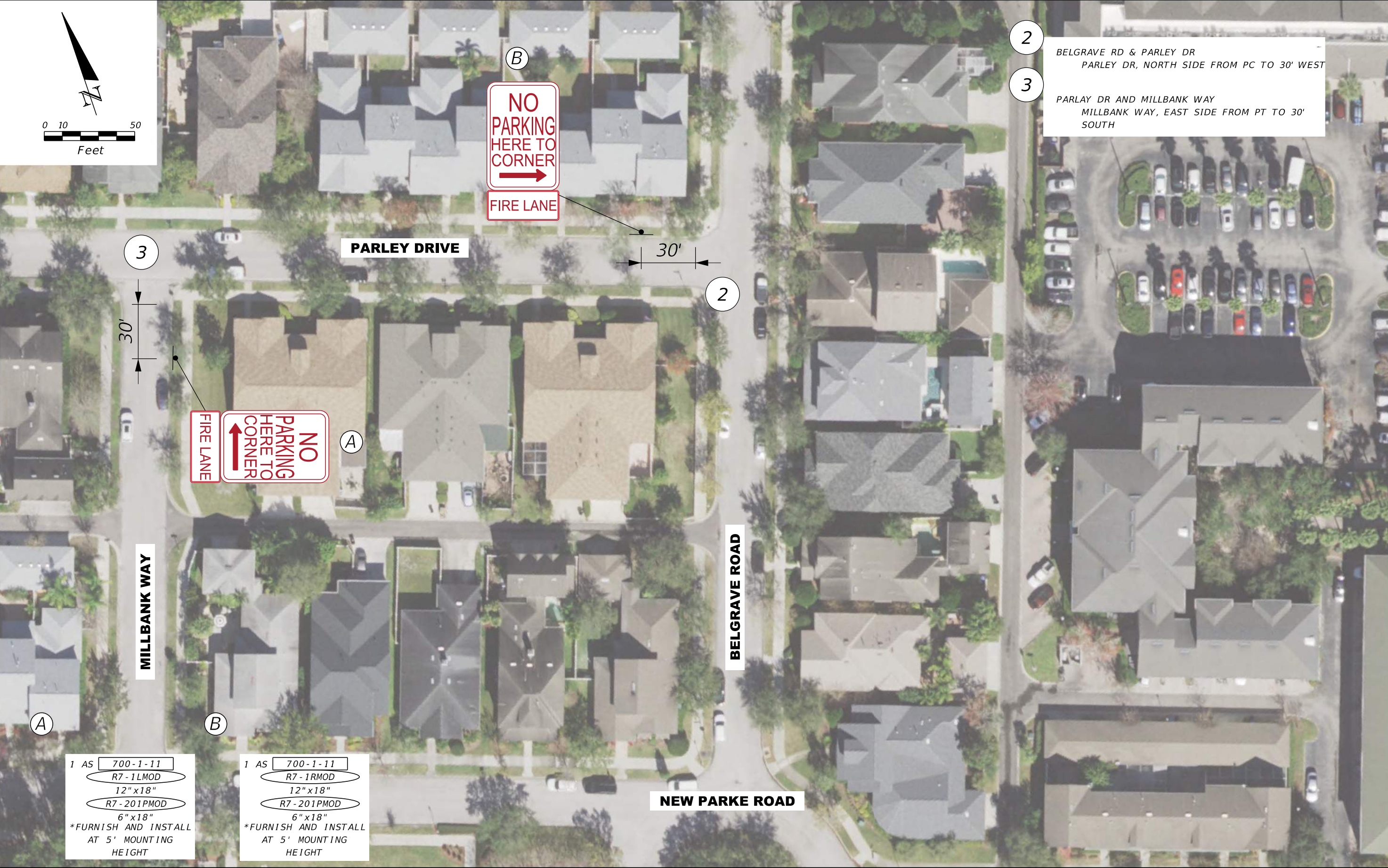
CIP NO.	SHT. NO.
N/A	2

THE OFFICIAL RECORD OF THIS SHEET IS THE ELECTRONIC FILE DIGITALLY SIGNED AND SEALED UNDER RULE 61G15-23.004, F.A.C.



THE OFFICIAL RECORD OF THIS SHEET IS THE ELECTRONIC FILE DIGITALLY SIGNED AND SEALED UNDER RULE 61G15-23.004, F.A.C.

REVISIONS				DANIEL HENDRICKSON, P.E. P.E. LICENSE NUMBER 76184 BURGESS & NIPLE, INC. 1511 N. WESTSHORE BLVD. SUITE 500 TAMPA, FL 33607	 PUBLIC WORKS ADMINISTRATION 601 E. KENNEDY BLVD. TAMPA, FLORIDA 33602	WEST PARK VILLAGE PARKING EXHIBIT AUTOTURN EXHIBIT (1)	CIP NO.	SHT. NO.
DATE	DESCRIPTION	DATE	DESCRIPTION					
								3



2 BELGRAVE RD & PARLEY DR
PARLEY DR, NORTH SIDE FROM PC TO 30' WEST

3 PARLEY DR AND MILLBANK WAY
MILLBANK WAY, EAST SIDE FROM PT TO 30' SOUTH

FIRE LANE
NO PARKING
HERE TO
CORNER
↑


NO PARKING
HERE TO
CORNER
→
FIRE LANE

1 AS 700-1-11
R7-1LMOD
12"x18"
R7-201PMOD
6"x18"
*FURNISH AND INSTALL
AT 5' MOUNTING
HEIGHT

1 AS 700-1-11
R7-1RMOD
12"x18"
R7-201PMOD
6"x18"
*FURNISH AND INSTALL
AT 5' MOUNTING
HEIGHT

REVISIONS			
DATE	DESCRIPTION	DATE	DESCRIPTION

DANIEL HENDRICKSON, P.E.
P.E. LICENSE NUMBER 76184
BURGESS & NIPLE, INC.
1511 N. WESTSHORE BLVD. SUITE 500
TAMPA, FL 33607

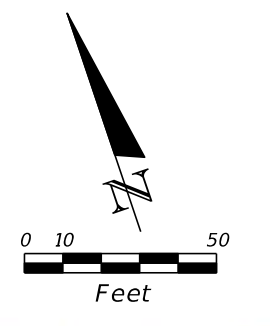

PUBLIC WORKS ADMINISTRATION
601 E. KENNEDY BLVD.
TAMPA, FLORIDA 33602

WEST PARK VILLAGE PARKING EXHIBIT

PLAN (2)

CIP NO.	SHT. NO.
N/A	4

THE OFFICIAL RECORD OF THIS SHEET IS THE ELECTRONIC FILE DIGITALLY SIGNED AND SEALED UNDER RULE 61G15-23.004, F.A.C.



4 PARLEY DR (AT THE SWIM CLUB)
 OUTSIDE CURVE: FROM COMMUNITY CENTER DW TO WEST OF CROSSWALK
 INSIDE CURVE: FROM SOUTH PC TO 30' SOUTH PARLEY DR AND NEW PARKE RD
 5 W SIDE OF PARLEY FROM 20' SOUTH OF SOUTH PC OF NEW PARKE TO 35' N OF N PC OF NEW PARKE

SWIM CLUB

NO PARKING ANY TIME
 FIRE LANE

NO PARKING ANY TIME
 FIRE LANE

NO PARKING ANY TIME
 FIRE LANE

NO PARKING HERE TO CORNER
 FIRE LANE

NO PARKING HERE TO CORNER
 FIRE LANE

PARLEY DRIVE

NEW PARKE ROAD

A

B

2 AS 700-1-11
 R7-1LMOD
 12"x18"
 R7-201PMOD
 6"x18"
 *FURNISH AND INSTALL AT 5' MOUNTING HEIGHT

2 AS 700-1-11
 R7-1RMOD
 12"x18"
 R7-201PMOD
 6"x18"
 *FURNISH AND INSTALL AT 5' MOUNTING HEIGHT

4

30'

37'

38'


5

103'

31'

REVISIONS			
DATE	DESCRIPTION	DATE	DESCRIPTION

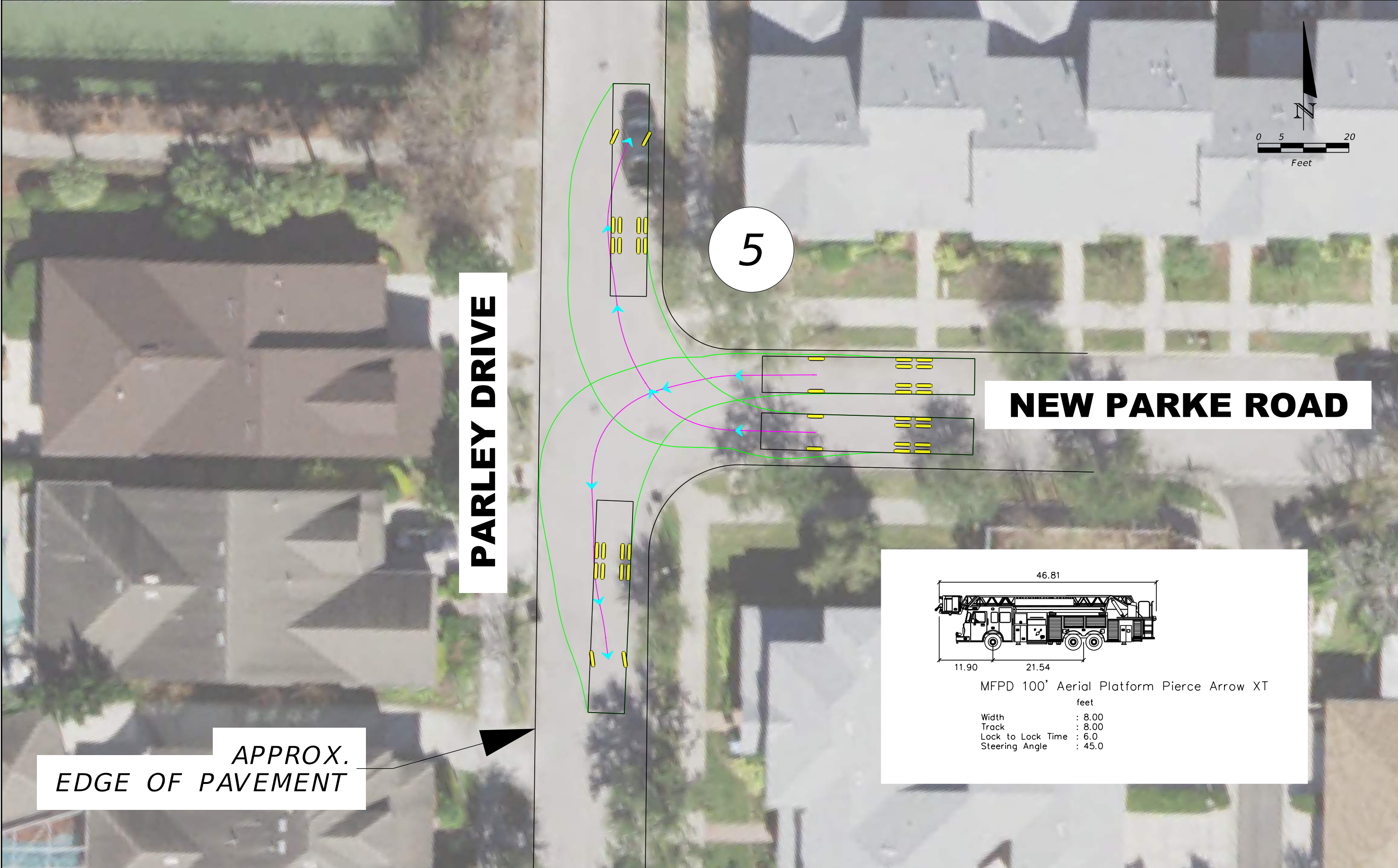
DANIEL HENDRICKSON, P.E.
 P.E. LICENSE NUMBER 76184
 BURGESS & NIPLE, INC.
 1511 N. WESTSHORE BLVD. SUITE 500
 TAMPA, FL 33607

 **PUBLIC WORKS ADMINISTRATION**
 601 E. KENNEDY BLVD.
 TAMPA, FLORIDA 33602

WEST PARK VILLAGE PARKING EXHIBIT
PLAN (3)

CIP NO.	SHT. NO.
N/A	5

THE OFFICIAL RECORD OF THIS SHEET IS THE ELECTRONIC FILE DIGITALLY SIGNED AND SEALED UNDER RULE 61G15-23.004, F.A.C.



**APPROX.
EDGE OF PAVEMENT**

NEW PARKE ROAD

MFPD 100' Aerial Platform Pierce Arrow XT

feet

- Width : 8.00
- Track : 8.00
- Lock to Lock Time : 6.0
- Steering Angle : 45.0

REVISIONS			
DATE	DESCRIPTION	DATE	DESCRIPTION

DANIEL HENDRICKSON, P.E.
P.E. LICENSE NUMBER 76184
BURGESS & NIPLE, INC.
1511 N. WESTSHORE BLVD. SUITE 500
TAMPA, FL 33607

PUBLIC WORKS ADMINISTRATION
601 E. KENNEDY BLVD.
TAMPA, FLORIDA 33602

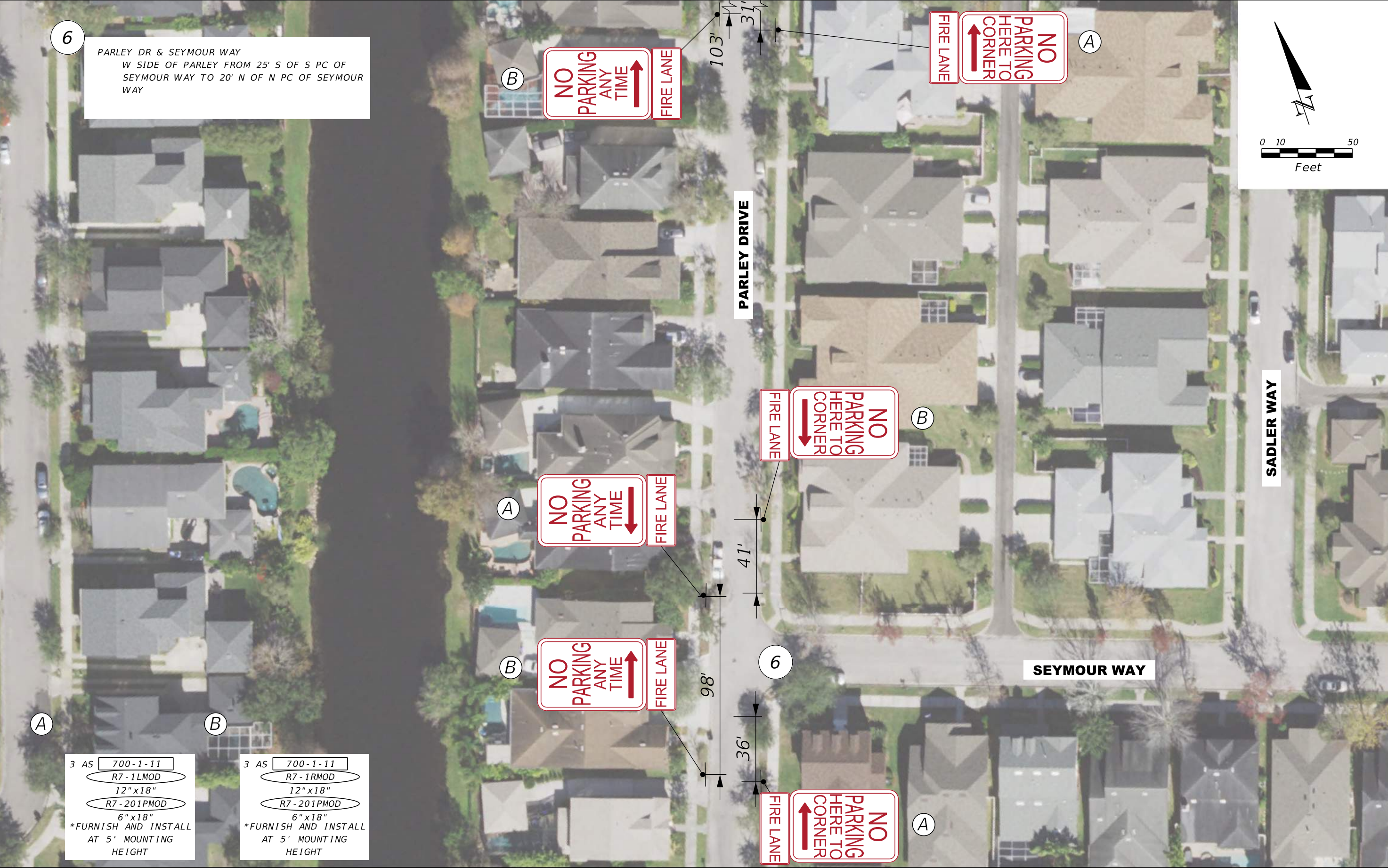
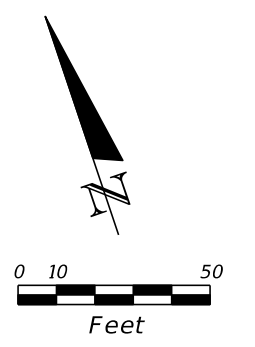
WEST PARK VILLAGE PARKING EXHIBIT
AUTOTURN EXHIBIT (2)

CIP NO.	SHT. NO.
	6

THE OFFICIAL RECORD OF THIS SHEET IS THE ELECTRONIC FILE DIGITALLY SIGNED AND SEALED UNDER RULE 61G15-23.004, F.A.C.

6

PARLEY DR & SEYMOUR WAY
 W SIDE OF PARLEY FROM 25' S OF S PC OF SEYMOUR WAY TO 20' N OF N PC OF SEYMOUR WAY




3 AS 700-1-11
 R7-1LMOD
 12"x18"
 R7-201PMOD
 6"x18"
 *FURNISH AND INSTALL AT 5' MOUNTING HEIGHT

3 AS 700-1-11
 R7-1RMOD
 12"x18"
 R7-201PMOD
 6"x18"
 *FURNISH AND INSTALL AT 5' MOUNTING HEIGHT

REVISIONS			
DATE	DESCRIPTION	DATE	DESCRIPTION

DANIEL HENDRICKSON, P.E.
 P.E. LICENSE NUMBER 76184
 BURGESS & NIPLE, INC.
 1511 N. WESTSHORE BLVD. SUITE 500
 TAMPA, FL 33607

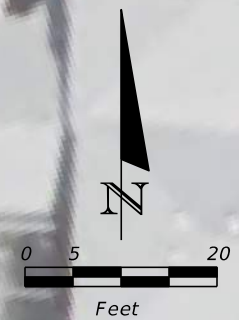
 PUBLIC WORKS ADMINISTRATION
 601 E. KENNEDY BLVD.
 TAMPA, FLORIDA 33602

WEST PARK VILLAGE PARKING EXHIBIT

 PLAN (4)

CIP NO.	SHT. NO.
N/A	7

THE OFFICIAL RECORD OF THIS SHEET IS THE ELECTRONIC FILE DIGITALLY SIGNED AND SEALED UNDER RULE 61G15-23.004, F.A.C.

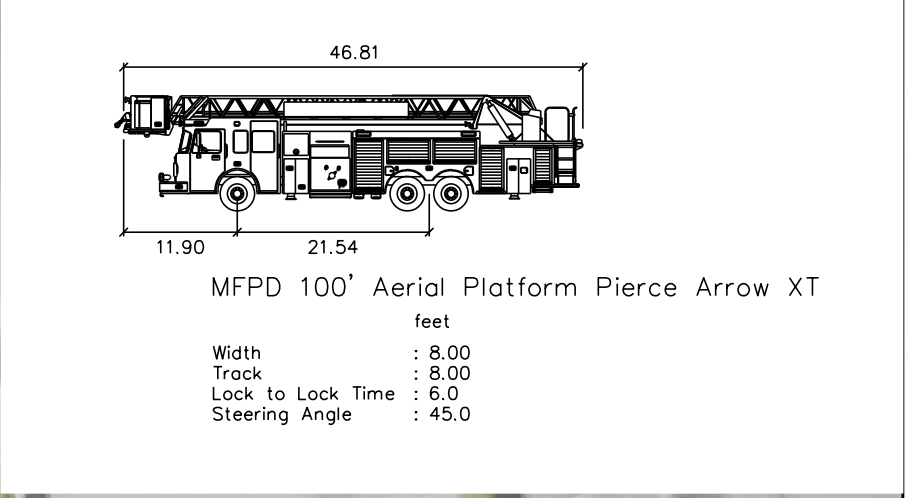


6

PARLEY DRIVE

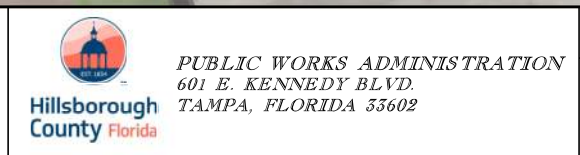
SEYMOUR WAY

APPROX.
EDGE OF PAVEMENT



REVISIONS			
DATE	DESCRIPTION	DATE	DESCRIPTION

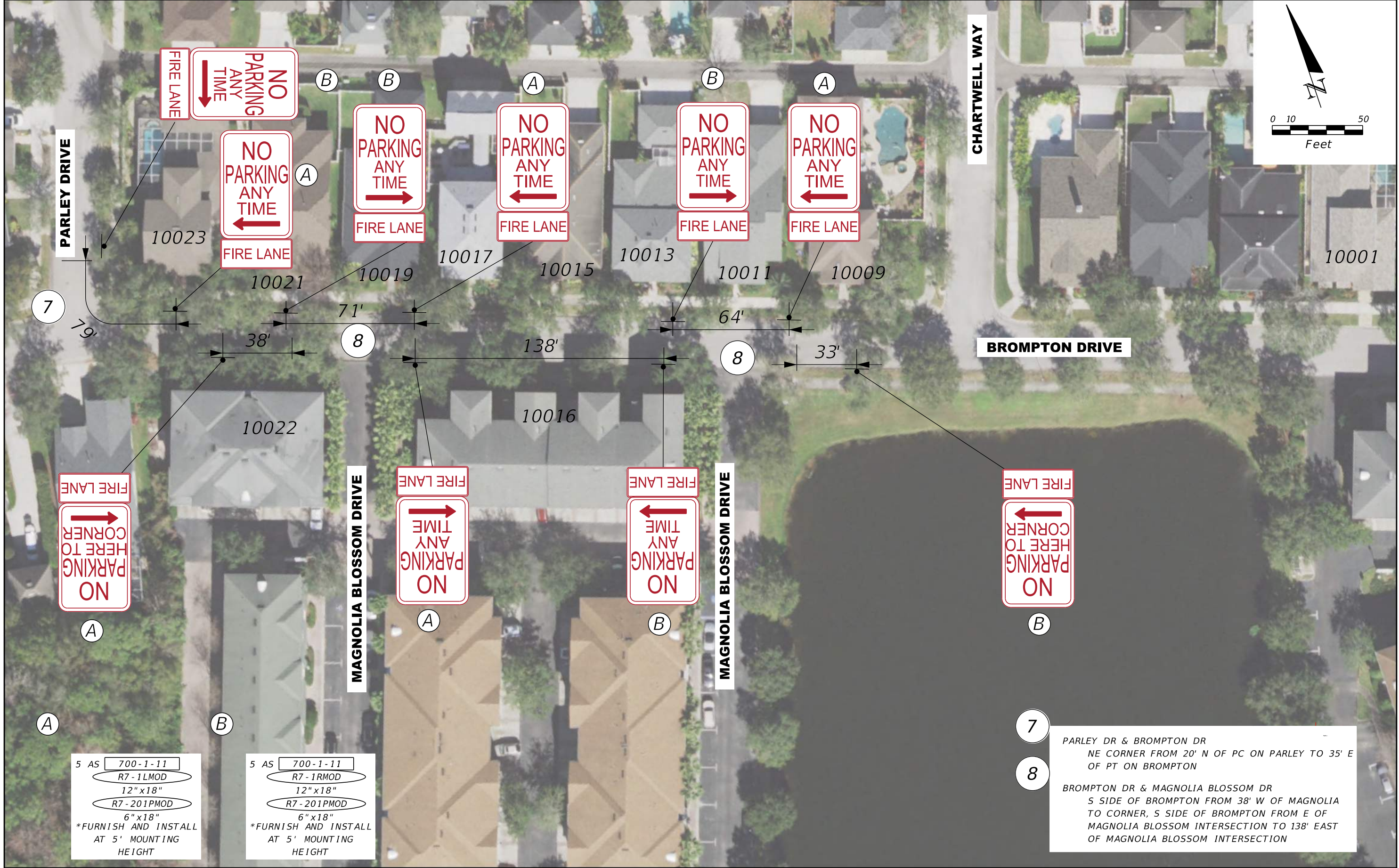
DANIEL HENDRICKSON, P.E.
P.E. LICENSE NUMBER 76184
BURGESS & NIPLE, INC.
1511 N. WESTSHORE BLVD. SUITE 500
TAMPA, FL 33607



WEST PARK VILLAGE PARKING EXHIBIT
AUTOTURN EXHIBIT (3)

CIP NO. SHT. NO.
 8

THE OFFICIAL RECORD OF THIS SHEET IS THE ELECTRONIC FILE DIGITALLY SIGNED AND SEALED UNDER RULE 61G15-23.004, F.A.C.




5 AS 700-1-11
 R7-1L MOD
 12" x 18"
 R7-201P MOD
 6" x 18"
 *FURNISH AND INSTALL
 AT 5' MOUNTING
 HEIGHT

5 AS 700-1-11
 R7-1R MOD
 12" x 18"
 R7-201P MOD
 6" x 18"
 *FURNISH AND INSTALL
 AT 5' MOUNTING
 HEIGHT

7
 8
 PARLEY DR & BROMPTON DR
 NE CORNER FROM 20' N OF PC ON PARLEY TO 35' E
 OF PT ON BROMPTON
 BROMPTON DR & MAGNOLIA BLOSSOM DR
 S SIDE OF BROMPTON FROM 38' W OF MAGNOLIA
 TO CORNER, S SIDE OF BROMPTON FROM E OF
 MAGNOLIA BLOSSOM INTERSECTION TO 138' EAST
 OF MAGNOLIA BLOSSOM INTERSECTION

REVISIONS			
DATE	DESCRIPTION	DATE	DESCRIPTION

DANIEL HENDRICKSON, P.E.
 P.E. LICENSE NUMBER 76184
 BURGESS & NIPLE, INC.
 1511 N. WESTSHORE BLVD. SUITE 500
 TAMPA, FL 33607



PUBLIC WORKS ADMINISTRATION
 601 E. KENNEDY BLVD.
 TAMPA, FLORIDA 33602

WEST PARK VILLAGE PARKING EXHIBIT
 PLAN (5)

CIP NO.	SHT. NO.
N/A	9


THE OFFICIAL RECORD OF THIS SHEET IS THE ELECTRONIC FILE DIGITALLY SIGNED AND SEALED UNDER RULE 61G15-23.004, F.A.C.



THE OFFICIAL RECORD OF THIS SHEET IS THE ELECTRONIC FILE DIGITALLY SIGNED AND SEALED UNDER RULE 61G15-23.004, F.A.C.

REVISIONS			
DATE	DESCRIPTION	DATE	DESCRIPTION

DANIEL HENDRICKSON, P.E.
P.E. LICENSE NUMBER 76184
BURGESS & NIPLE, INC.
1511 N. WESTSHORE BLVD. SUITE 500
TAMPA, FL 33607



PUBLIC WORKS ADMINISTRATION
601 E. KENNEDY BLVD.
TAMPA, FLORIDA 33602


WEST PARK VILLAGE PARKING EXHIBIT
AUTOTURN EXHIBIT(4)

CIP NO.	SHT. NO.
	10



REVISIONS			
DATE	DESCRIPTION	DATE	DESCRIPTION

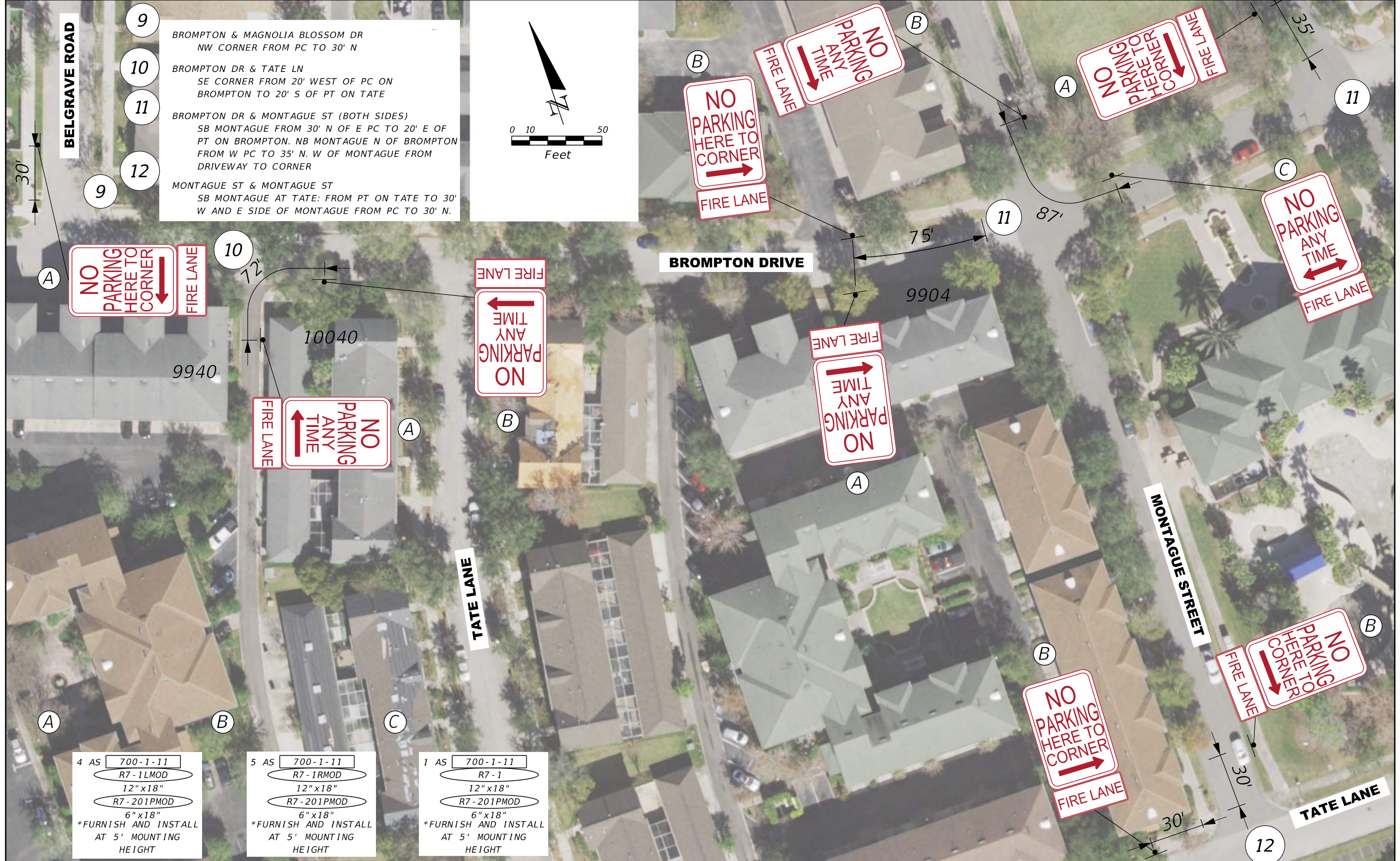
DANIEL HENDRICKSON, P.E.
P.E. LICENSE NUMBER 76184
BURGESS & NIPLE, INC.
1511 N. WESTSHORE BLVD. SUITE 500
TAMPA, FL 33607

 **Hillsborough County Florida**
PUBLIC WORKS ADMINISTRATION
601 E. KENNEDY BLVD.
TAMPA, FLORIDA 33602

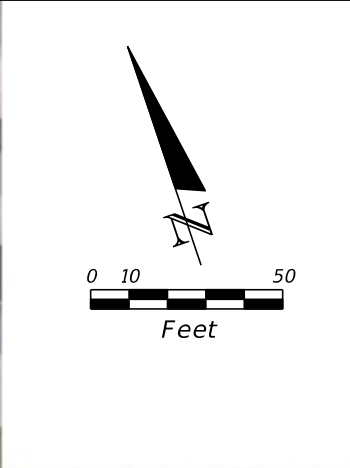
WEST PARK VILLAGE PARKING EXHIBIT
AUTOTURN EXHIBIT(5)

CIP NO.	SHT. NO.
	11

THE OFFICIAL RECORD OF THIS SHEET IS THE ELECTRONIC FILE DIGITALLY SIGNED AND SEALED UNDER RULE 61G15-23.004, F.A.C.



- 9 BROMPTON & MAGNOLIA BLOSSOM DR
NW CORNER FROM PC TO 30' N
- 10 BROMPTON DR & TATE LN
SE CORNER FROM 20' WEST OF PC ON
BROMPTON TO 20' S OF PT ON TATE
- 11 BROMPTON DR & MONTAGUE ST (BOTH SIDES)
SB MONTAGUE FROM 30' N OF E PC TO 20' E OF
PT ON BROMPTON. NB MONTAGUE N OF BROMPTON
FROM W PC TO 35' N. W OF MONTAGUE FROM
DRIVEWAY TO CORNER
- 12 MONTAGUE ST & MONTAGUE ST
SB MONTAGUE AT TATE: FROM PT ON TATE TO 30'
W AND E SIDE OF MONTAGUE FROM PC TO 30' N.



NO PARKING
HERE TO
CORNER
FIRE LANE

FIRE LANE
NO PARKING
ANY
TIME
FIRE LANE

FIRE LANE
NO PARKING
ANY
TIME
FIRE LANE

FIRE LANE
NO PARKING
ANY
TIME
FIRE LANE

NO PARKING
HERE TO
CORNER
FIRE LANE

NO PARKING
HERE TO
CORNER
FIRE LANE

4 AS 700-1-11
R7-1LMOD
12"x18"
R7-201PMOD
6"x18"
*FURNISH AND INSTALL
AT 5' MOUNTING
HEIGHT

5 AS 700-1-11
R7-1RMOD
12"x18"
R7-201PMOD
6"x18"
*FURNISH AND INSTALL
AT 5' MOUNTING
HEIGHT

1 AS 700-1-11
R7-1
12"x18"
R7-201PMOD
6"x18"
*FURNISH AND INSTALL
AT 5' MOUNTING
HEIGHT

REVISIONS			
DATE	DESCRIPTION	DATE	DESCRIPTION

DANIEL HENDRICKSON, P.E.
P.E. LICENSE NUMBER 76184
BURGESS & NIPLE, INC.
1511 N. WESTSHORE BLVD. SUITE 500
TAMPA, FL 33607

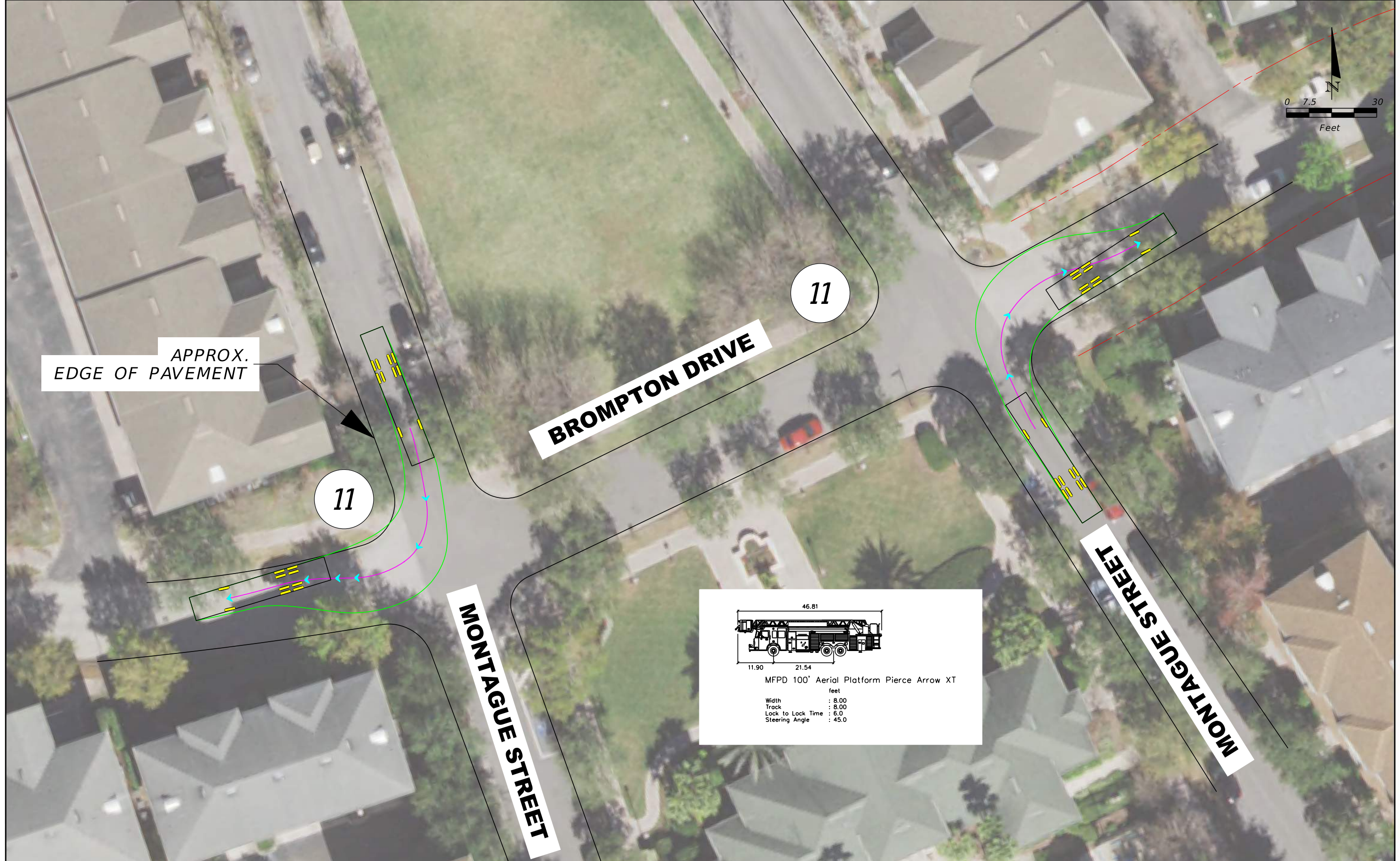
PUBLIC WORKS ADMINISTRATION
601 E. KENNEDY BLVD.
TAMPA, FLORIDA 33602

WEST PARK VILLAGE PARKING EXHIBIT

PLAN (6)

CIP NO.	SHT. NO.
N/A	12


THE OFFICIAL RECORD OF THIS SHEET IS THE ELECTRONIC FILE DIGITALLY SIGNED AND SEALED UNDER RULE 61G15-23.004, F.A.C.



THE OFFICIAL RECORD OF THIS SHEET IS THE ELECTRONIC FILE DIGITALLY SIGNED AND SEALED UNDER RULE 61G15-23.004, F.A.C.

REVISIONS			
DATE	DESCRIPTION	DATE	DESCRIPTION

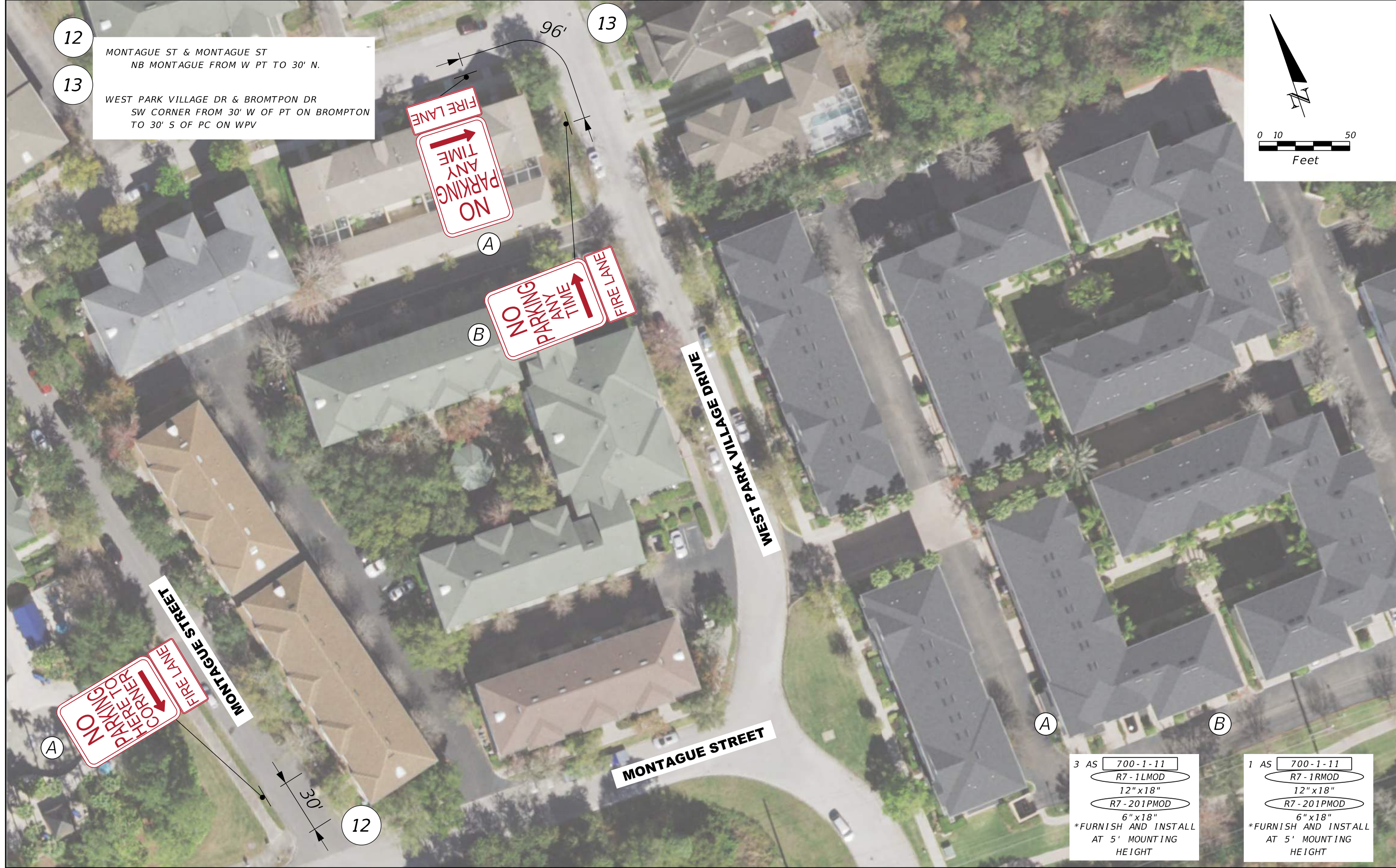
DANIEL HENDRICKSON, P.E.
 P.E. LICENSE NUMBER 76184
 BURGESS & NIPLE, INC.
 1511 N. WESTSHORE BLVD. SUITE 500
 TAMPA, FL 33607



PUBLIC WORKS ADMINISTRATION
 601 E. KENNEDY BLVD.
 TAMPA, FLORIDA 33602

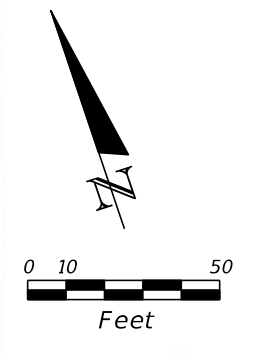
WEST PARK VILLAGE PARKING EXHIBIT
AUTOTURN EXHIBIT (6)

CIP NO.	SHT. NO.
	13



12 MONTAGUE ST & MONTAGUE ST
NB MONTAGUE FROM W PT TO 30' N.

13 WEST PARK VILLAGE DR & BROMPTON DR
SW CORNER FROM 30' W OF PT ON BROMPTON
TO 30' S OF PC ON WPV



NO PARKING CORNER TO CORNER
FIRE LANE
MONTAGUE STREET


NO PARKING ANY TIME
FIRE LANE
NO PARKING ANY TIME
FIRE LANE

3 AS 700-1-11
R7-1LMOD
12"x18"
R7-201PMOD
6"x18"
*FURNISH AND INSTALL
AT 5' MOUNTING
HEIGHT

1 AS 700-1-11
R7-1RMOD
12"x18"
R7-201PMOD
6"x18"
*FURNISH AND INSTALL
AT 5' MOUNTING
HEIGHT

REVISIONS			
DATE	DESCRIPTION	DATE	DESCRIPTION

DANIEL HENDRICKSON, P.E.
P.E. LICENSE NUMBER 76184
BURGESS & NIPLE, INC.
1511 N. WESTSHORE BLVD. SUITE 500
TAMPA, FL 33607

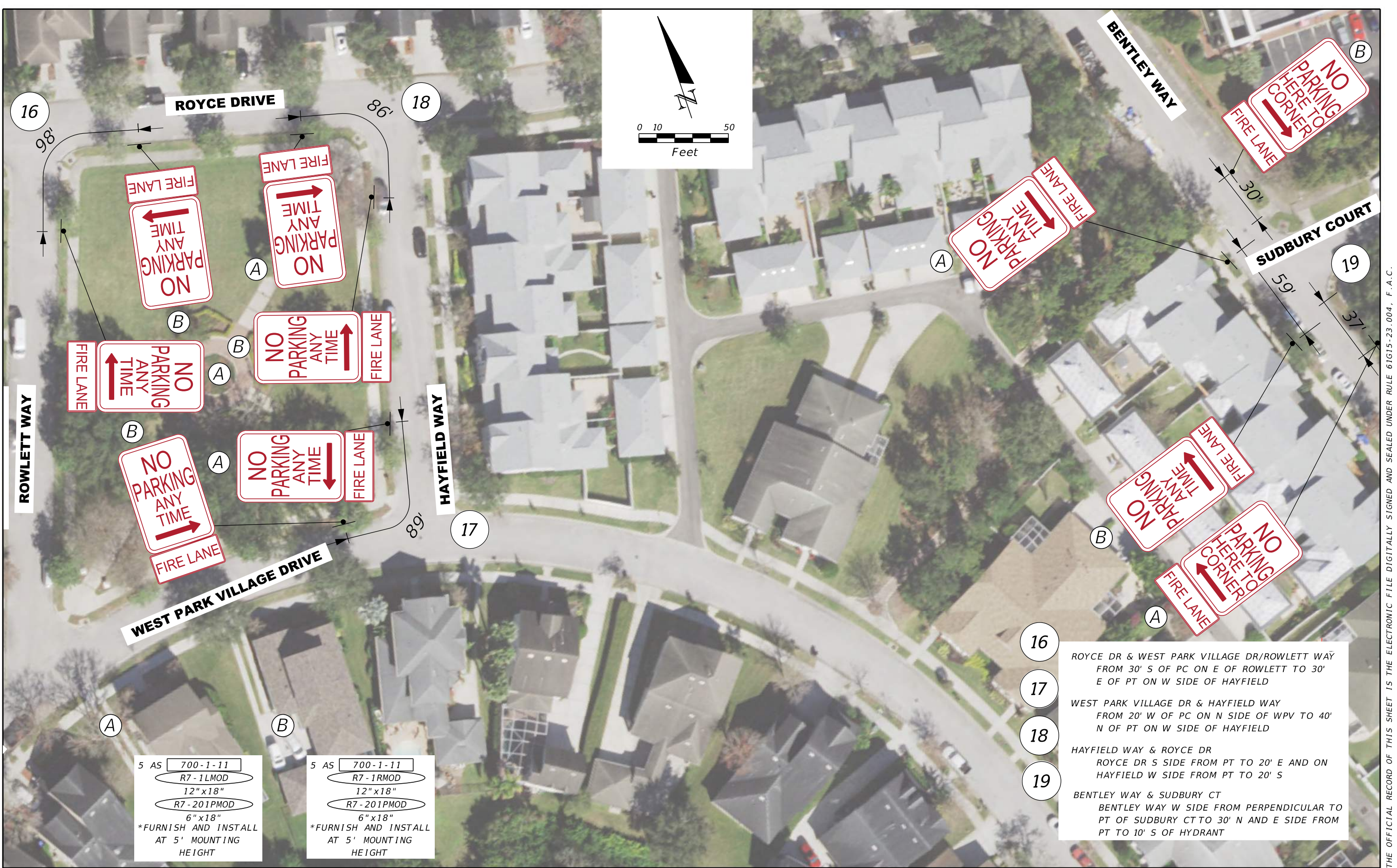
 PUBLIC WORKS ADMINISTRATION
601 E. KENNEDY BLVD.
TAMPA, FLORIDA 33602

WEST PARK VILLAGE PARKING EXHIBIT

PLAN (7)

CIP NO.	SHT. NO.
N/A	14

THE OFFICIAL RECORD OF THIS SHEET IS THE ELECTRONIC FILE DIGITALLY SIGNED AND SEALED UNDER RULE 61G15-23.004, F.A.C.




5 AS 700-1-11
 R7-1LMOD
 12"x18"
 R7-201PMOD
 6"x18"
 *FURNISH AND INSTALL
 AT 5' MOUNTING
 HEIGHT

5 AS 700-1-11
 R7-1RMOD
 12"x18"
 R7-201PMOD
 6"x18"
 *FURNISH AND INSTALL
 AT 5' MOUNTING
 HEIGHT

- 16 ROYCE DR & WEST PARK VILLAGE DR/ROWLETT WAY
FROM 30' S OF PC ON E OF ROWLETT TO 30' E OF PT ON W SIDE OF HAYFIELD
- 17 WEST PARK VILLAGE DR & HAYFIELD WAY
FROM 20' W OF PC ON N SIDE OF WPV TO 40' N OF PT ON W SIDE OF HAYFIELD
- 18 HAYFIELD WAY & ROYCE DR
ROYCE DR S SIDE FROM PT TO 20' E AND ON HAYFIELD W SIDE FROM PT TO 20' S
- 19 BENTLEY WAY & SUDBURY CT
BENTLEY WAY W SIDE FROM PERPENDICULAR TO PT OF SUDBURY CT TO 30' N AND E SIDE FROM PT TO 10' S OF HYDRANT

REVISIONS			
DATE	DESCRIPTION	DATE	DESCRIPTION

DANIEL HENDRICKSON, P.E.
 P.E. LICENSE NUMBER 76184
 BURGESS & NIPLE, INC.
 1511 N. WESTSHORE BLVD. SUITE 500
 TAMPA, FL 33607

 PUBLIC WORKS ADMINISTRATION
 601 E. KENNEDY BLVD.
 TAMPA, FLORIDA 33602

WEST PARK VILLAGE PARKING EXHIBIT
PLAN (8)

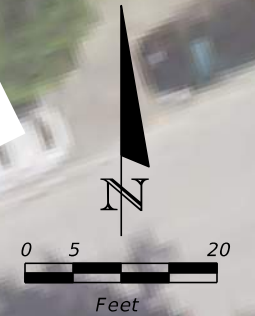
CIP NO.	SHT. NO.
N/A	15

THE OFFICIAL RECORD OF THIS SHEET IS THE ELECTRONIC FILE DIGITALLY SIGNED AND SEALED UNDER RULE 61G15-23.004, F.A.C.

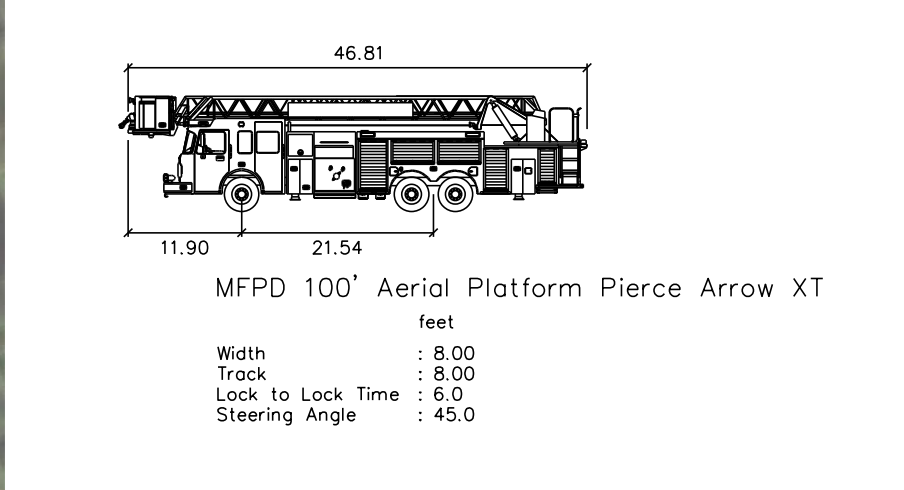
19

SUDBURY COURT

BENTLEY WAY




APPROX.
EDGE OF PAVEMENT



REVISIONS			
DATE	DESCRIPTION	DATE	DESCRIPTION

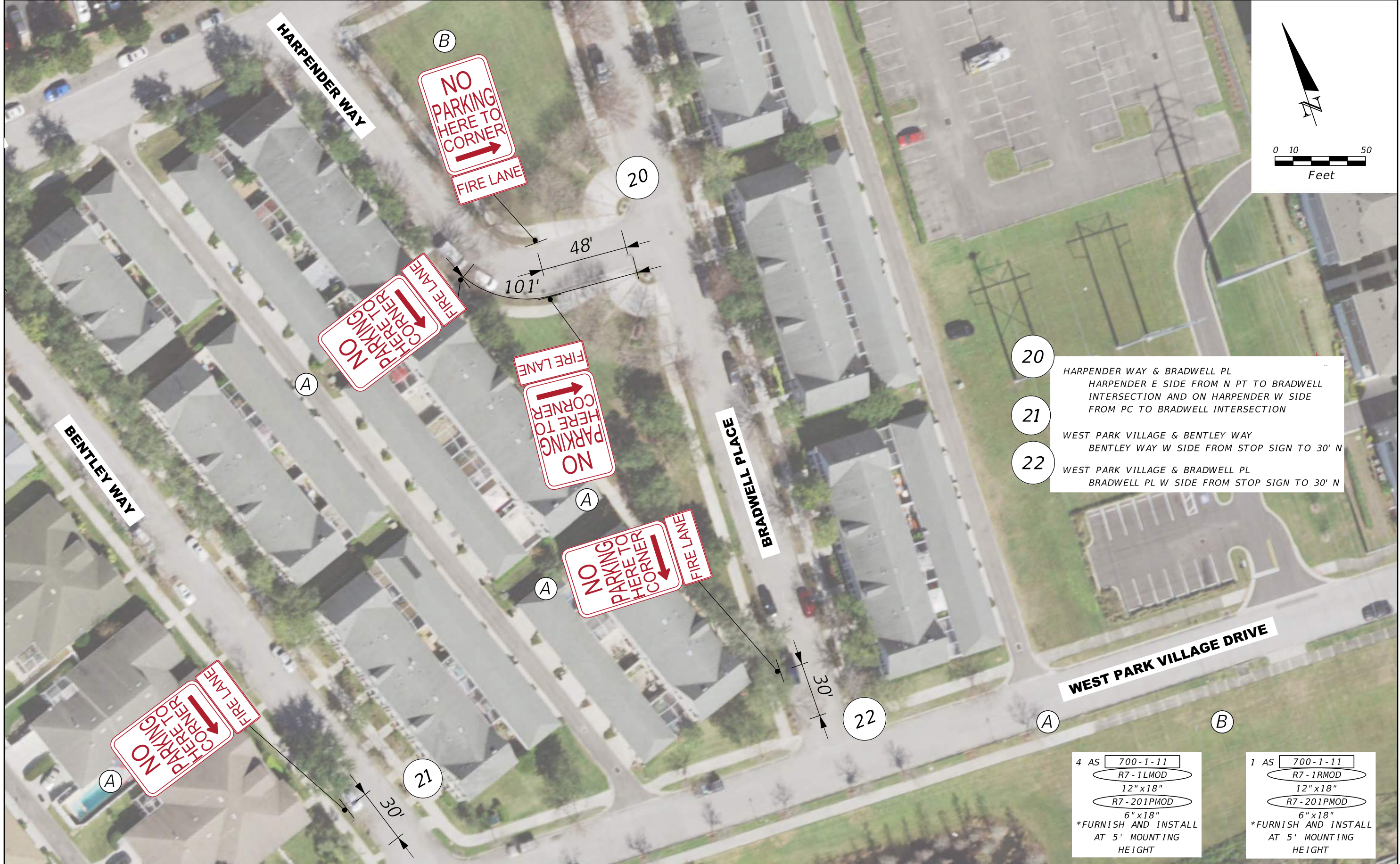
DANIEL HENDRICKSON, P.E.
P.E. LICENSE NUMBER 76184
BURGESS & NIPLE, INC.
1511 N. WESTSHORE BLVD. SUITE 500
TAMPA, FL 33607

 **Hillsborough County Florida**
PUBLIC WORKS ADMINISTRATION
601 E. KENNEDY BLVD.
TAMPA, FLORIDA 33602

WEST PARK VILLAGE PARKING EXHIBIT
AUTOTURN EXHIBIT (7)

CIP NO. SHT. NO.
 16

THE OFFICIAL RECORD OF THIS SHEET IS THE ELECTRONIC FILE DIGITALLY SIGNED AND SEALED UNDER RULE 61G15-23.004, F.A.C.




- 20 HARPENDER WAY & BRADWELL PL
HARPENDER E SIDE FROM N PT TO BRADWELL INTERSECTION AND ON HARPENDER W SIDE FROM PC TO BRADWELL INTERSECTION
- 21 WEST PARK VILLAGE & BENTLEY WAY
BENTLEY WAY W SIDE FROM STOP SIGN TO 30' N
- 22 WEST PARK VILLAGE & BRADWELL PL
BRADWELL PL W SIDE FROM STOP SIGN TO 30' N

4 AS 700-1-11
R7-1LMOD
12" x 18"
R7-201PMOD
6" x 18"
*FURNISH AND INSTALL AT 5' MOUNTING HEIGHT

1 AS 700-1-11
R7-1RMOD
12" x 18"
R7-201PMOD
6" x 18"
*FURNISH AND INSTALL AT 5' MOUNTING HEIGHT

REVISIONS			
DATE	DESCRIPTION	DATE	DESCRIPTION

DANIEL HENDRICKSON, P.E.
P.E. LICENSE NUMBER 76184
BURGESS & NIPLE, INC.
1511 N. WESTSHORE BLVD. SUITE 500
TAMPA, FL 33607



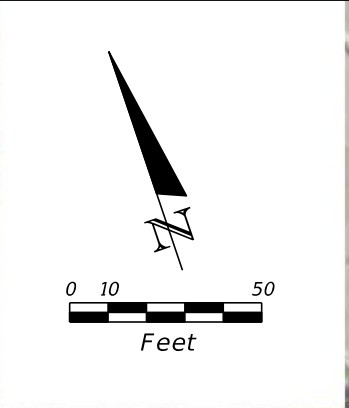
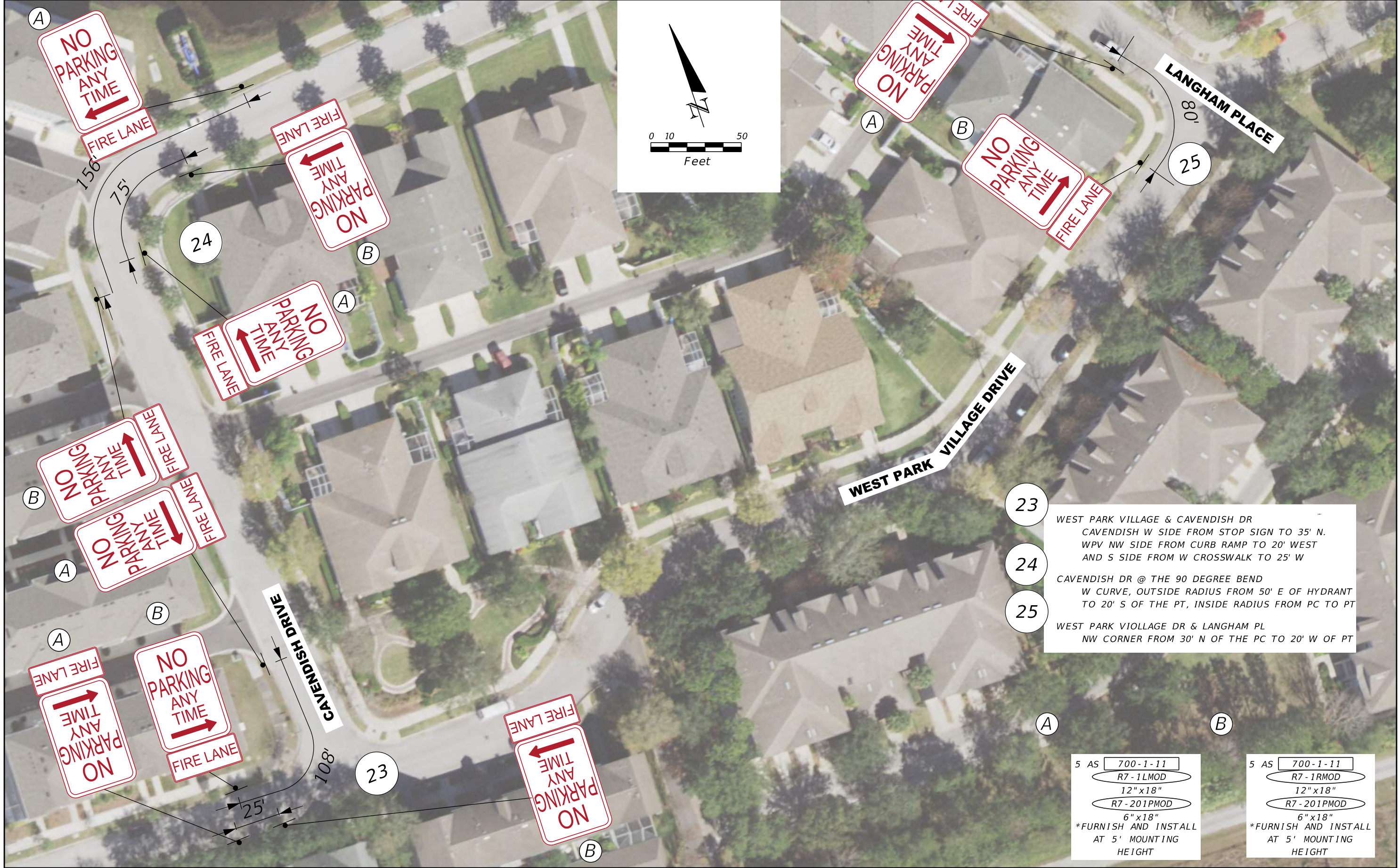
PUBLIC WORKS ADMINISTRATION
601 E. KENNEDY BLVD.
TAMPA, FLORIDA 33602

WEST PARK VILLAGE PARKING EXHIBIT

PLAN (9)

CIP NO.	SHT. NO.
N/A	17

THE OFFICIAL RECORD OF THIS SHEET IS THE ELECTRONIC FILE DIGITALLY SIGNED AND SEALED UNDER RULE 61G15-23.004, F.A.C.




- 23 WEST PARK VILLAGE & CAVENDISH DR
CAVENDISH W SIDE FROM STOP SIGN TO 35' N.
WPV NW SIDE FROM CURB RAMP TO 20' WEST
AND S SIDE FROM W CROSSWALK TO 25' W
- 24 CAVENDISH DR @ THE 90 DEGREE BEND
W CURVE, OUTSIDE RADIUS FROM 50' E OF HYDRANT
TO 20' S OF THE PT, INSIDE RADIUS FROM PC TO PT
- 25 WEST PARK VIOLLAGE DR & LANGHAM PL
NW CORNER FROM 30' N OF THE PC TO 20' W OF PT

5 AS 700-1-11
R7-1L MOD
12" x 18"
R7-201PMOD
6" x 18"
*FURNISH AND INSTALL
AT 5' MOUNTING
HEIGHT

5 AS 700-1-11
R7-1R MOD
12" x 18"
R7-201PMOD
6" x 18"
*FURNISH AND INSTALL
AT 5' MOUNTING
HEIGHT

REVISIONS			
DATE	DESCRIPTION	DATE	DESCRIPTION

DANIEL HENDRICKSON, P.E.
P.E. LICENSE NUMBER 76184
BURGESS & NIPLE, INC.
1511 N. WESTSHORE BLVD. SUITE 500
TAMPA, FL 33607

 PUBLIC WORKS ADMINISTRATION
601 E. KENNEDY BLVD.
TAMPA, FLORIDA 33602

WEST PARK VILLAGE PARKING EXHIBIT

PLAN (10)

CIP NO.	SHT. NO.
N/A	18

THE OFFICIAL RECORD OF THIS SHEET IS THE ELECTRONIC FILE DIGITALLY SIGNED AND SEALED UNDER RULE 61G15-23.004, F.A.C.